

Accurate. Accredited. Rapid. Reliable.

ISO/IEC 17025:2017 Accredited Lab

Certificate of Analysis

CannaNums

Yumco Industries Inc.
4435 E. Chandler Blvd.
Phoenix, AZ 85048

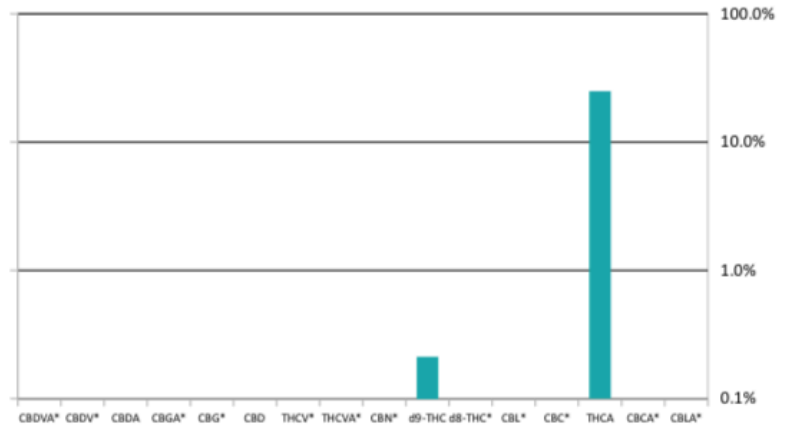
Manifest ID # N/A
Client External ID # N/A
Category: Harvested Flower
Sample Type: Lot Sample
Sample Name: Peach Cobbler

Licensed Laboratory #17
Analysis: Non-Mandatory
Sample ID# OR003260325-61
Received: 03/25/2026 by WS
Completed: 03/27/2026 by AB

0.21% Total d9-THC	PASS Heavy Metals	0.56 aw Water Activity	30% Total THCA
------------------------------	-----------------------------	----------------------------------	--------------------------

Potency Profile

Analyte	% by Mass	Mass (mg/g)
CBDVA*	NT	NT
CBDV*	NT	NT
CBDA	NT	NT
CBGA*	NT	NT
CBG*	NT	NT
CBD	NT	NT
THCV*	NT	NT
THCP	NT	NT
CBN*	NT	NT
d9-THC	0.21%	2.1
d8-THC	NT	NT
CBL*	NT	NT
CBC*	NT	NT
THCA	30%	300
CBCA*	NT	NT
CBLA*	NT	NT
TOTALS	30.21%	302



*Denotes cannabinoids outside of the Accreditation of Capital Analytics Labs

Comments: Product contains less than 0.3% of d9-THC and is classified as Hemp under the federal 2018 U.S. Farm Bill.



For Tested Metals, "Pass" means Cd, As, Hg under 200 ppb and Pb under 500 ppb.

IHE = Insect fragment, Hair or Excreta; LOQ = Limit of Quantitation, LOD = Limit of Detection, ND = Not Detected, N/A = Not Applicable, MDL = Minimum Detection Level, MRL = Mandatory Reporting Limit, Trace = <LOQ or <MRL but >LOD or >MDL

The reported results are based on a sample weight with the applicable moisture content for that sample included; Unless otherwise stated, all quality control samples performed within specifications established by the Laboratory.

A.J. Williams
A.J. Williams, Lab Director

SEAL of  Capital
Analytics
Labs

This product has been tested by Capital Analytics Labs using valid testing methodologies and a quality system as required by state law. Values reported relate only to the product tested. Capital Analytics makes no claims as to the efficacy, safety or other risks associated with any detected or non-detected levels of any compounds reported herein. Sample was not collected by Capital Analytics Labs. Therefore, Capital Analytics Labs makes no claims that the sample is representative.

Method Info: Potency determined by HPLC-UV per INT12G06v4.23 December 2024; Residual Solvents determined by GC-MS, per INT12G13v3.1 January 2025; Terpenes determined by GC-FID per INT12G15V2.5, January 2025; Water Activity determined by chilled mirror dew point per INT12G16v3.1 January 2025; Microbial (bacteria) determined by isothermal DNA amplification with bioluminescence detection (3M MDS) and Petrifilm™ EB per INT12G11v6, INT12G12v6, and INT 12G13v6 January 2025; Mycotoxins determined per competitive ELISA and optical detection INT12G14V3 December 2025; Foreign Matter determined by visual inspection with stereo zoom microscope, INT12g01v3.1 January 2025.